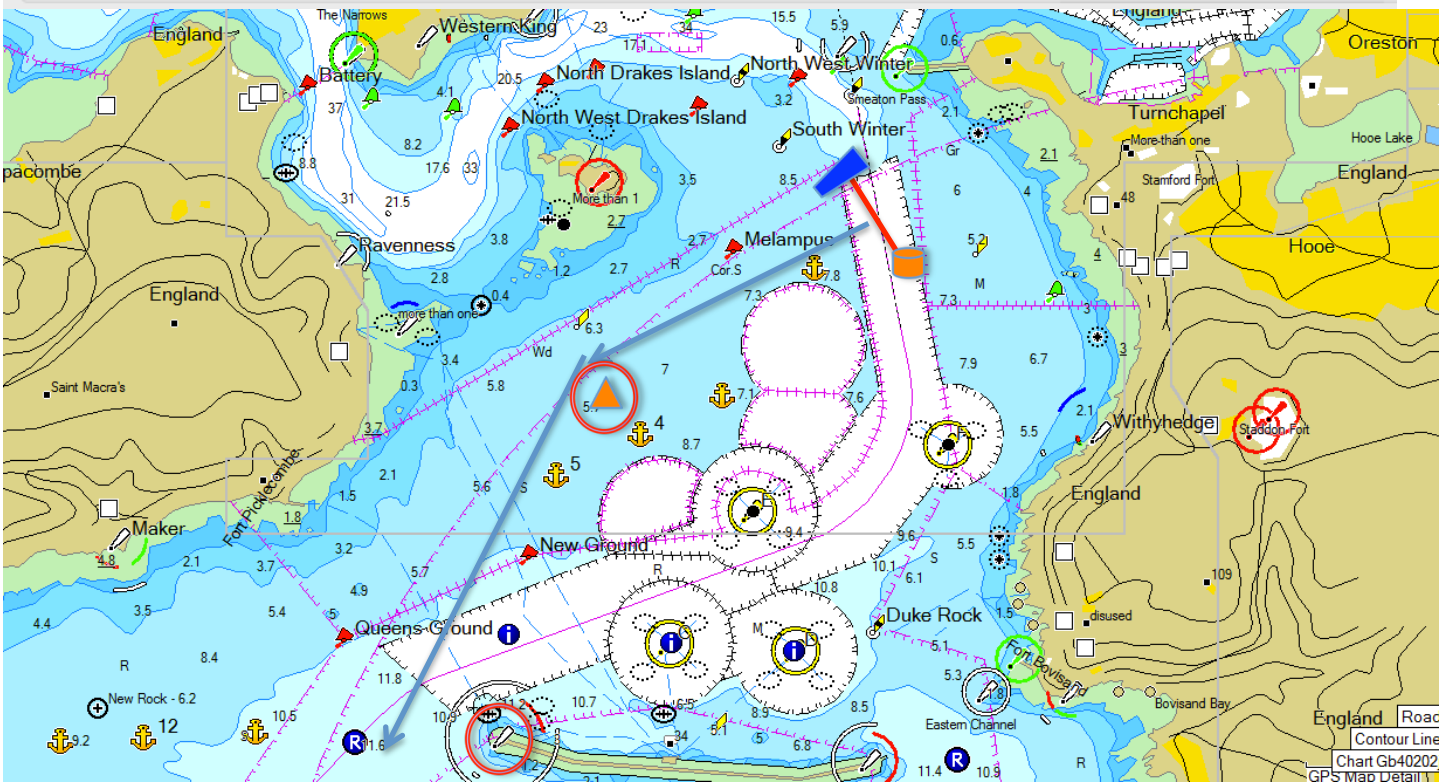
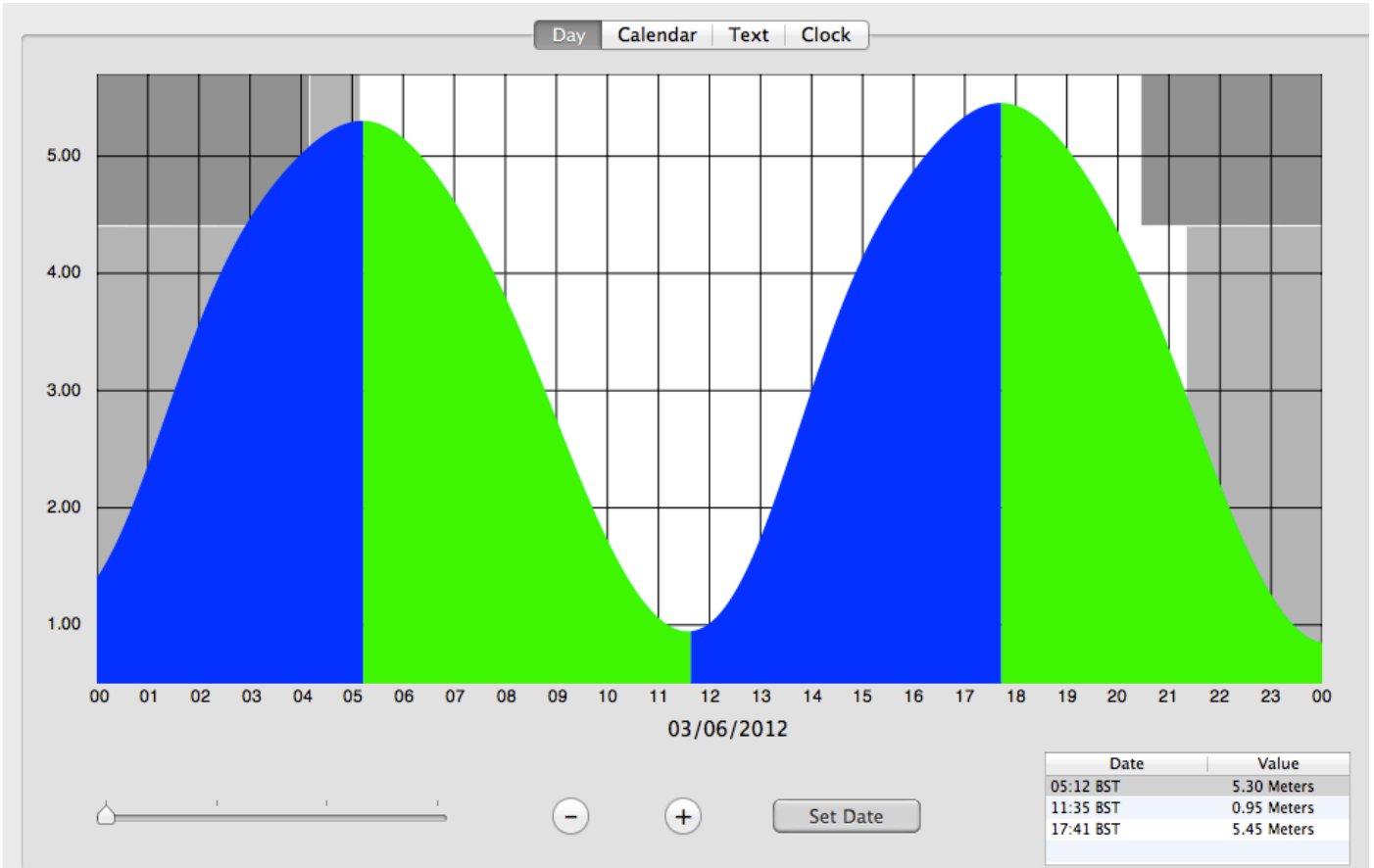
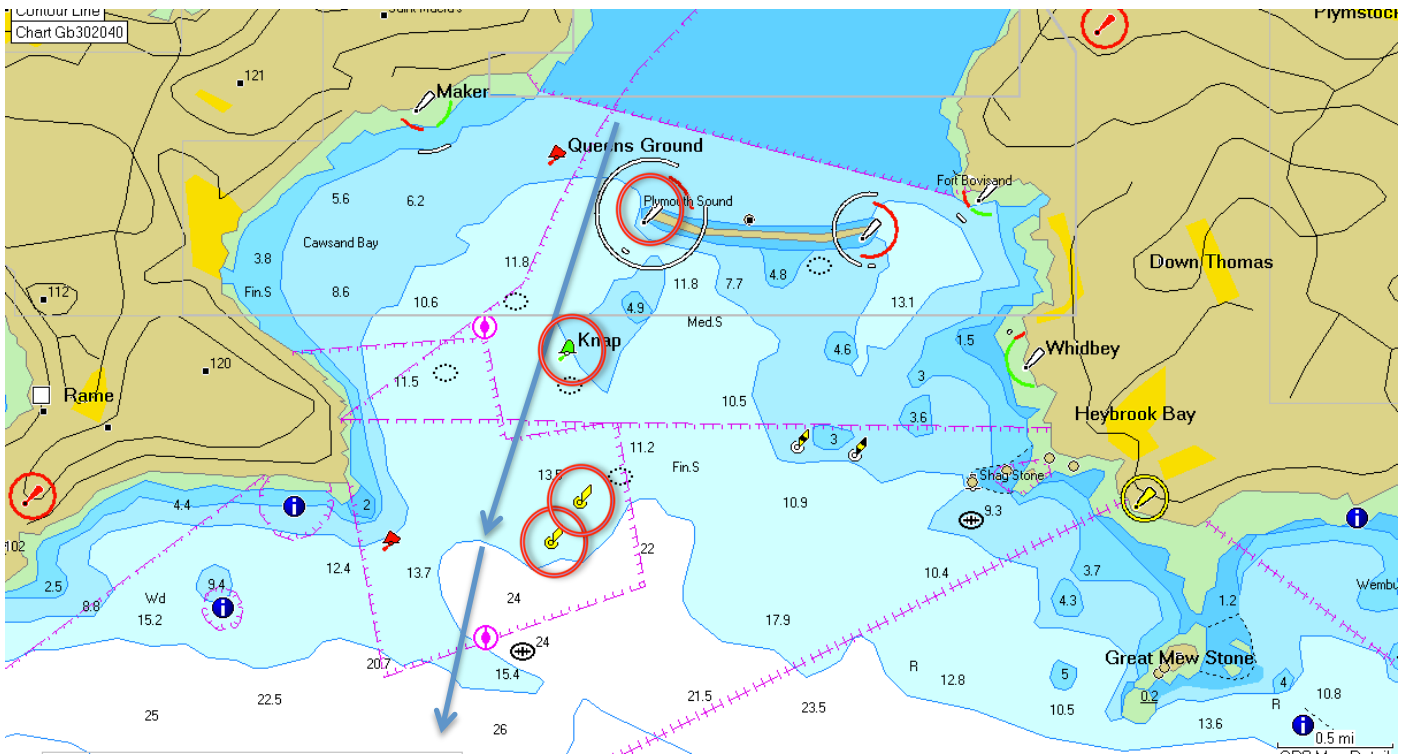


Starting Area

Not to be used for Navigation

These form part of the Sailing Instructions





The position of the start line and a laid orange cone are for indication only.

The start line will be between Committee Boat “Fulmar” on Channel 72 and an orange pillar buoy to Port of Fulmar.

Course for leaving Plymouth

Leave a laid orange cone to Port. The distance and bearing will be announced on 72 and displayed on the back of Fulmar.

Plymouth Breakwater to Port

Knapp to Port (a green lateral buoy) – Approximate position 50° 19'.56 N 004° 10'.02 W

OSR (N) to Port (a yellow special mark) - Approximate position 50° 18'.99 N 004° 10'.12 W

OSR (S) to Port (a yellow special mark) – Approximate position 50° 18'.85 N 004° 10'.11 W

Eddystone Rock Light to Starboard – Approximate position 50° 10'.84 N 004° 15'.94 W